

# Implement Catalogue

FOR KUBOTA COMPACT TRACTOR



**The right equipment  
for all your applications**



### MACHINES FOR SOIL CULTIVATION

- Light, compact and efficient
- Perfectly adapted to the tractor optimizing its performance



Equipment for tillage and seed bed preparation...

...for a healthy soil structure

# Soil

## ROTARY TILLERS

Made for Kubota



Model ZLL



Model BH



### Robust rotary tillers for efficient soil cultivation

- ▣ Three-point linkage Cat. 1
- ▣ Strong positive drive system
- ▣ Adjustable working depth up to 20 cm
- ▣ SA models with mechanical offset

| Model  | Tractor HP | Working width (m) | Working depth (cm) | Weights (kg) | Total width (m) | PTO RPM (1/min.) | Tiller RPM (1/min.) | No. of blades | Blades per flange | Rear hitch category | Side offset | Side drive            |
|--------|------------|-------------------|--------------------|--------------|-----------------|------------------|---------------------|---------------|-------------------|---------------------|-------------|-----------------------|
| SA85   | 10 - 25    | 0,85              | 10 - 20            | 110          | 0,92            | 540              | 253                 | 16            | 4                 | 1                   | 24          | Chain drive, oil bath |
| SA105  | 10 - 25    | 1,05              | 10 - 20            | 120          | 1,12            | 540              | 253                 | 20            | 4                 | 1                   | 34          |                       |
| SA125  | 10 - 25    | 1,25              | 10 - 20            | 130          | 1,32            | 540              | 253                 | 24            | 4                 | 1                   | 44          |                       |
| BH100  | 15 - 30    | 1,50              | 10 - 20            | 126          | 1,15            | 540              | 253                 | 16            | 4                 | 1                   | -           |                       |
| BH120  | 15 - 30    | 1,20              | 10 - 20            | 144          | 1,37            | 540              | 253                 | 20            | 4                 | 1                   | -           |                       |
| ZLL130 | 20 - 35    | 1,43              | 10 - 20            | 164          | 1,43            | 540              | 240                 | 24 - 36       | 4/6               | 1                   | -           |                       |
| ZLL140 | 20 - 35    | 1,53              | 10 - 20            | 174          | 1,53            | 540              | 240                 | 24 - 36       | 4/6               | 1                   | -           |                       |
| ZLL150 | 20 - 35    | 1,63              | 10 - 20            | 180          | 1,63            | 540              | 240                 | 24 - 36       | 4/6               | 1                   | -           |                       |
| CS145  | 30 - 55    | 1,58              | 30 - 50            | 254          | 1,58            | 540              | 263                 | 28 - 42       | 4/6               | 1                   | -           |                       |
| CS165  | 30 - 55    | 1,78              | 30 - 50            | 284          | 1,78            | 540              | 263                 | 32 - 48       | 4/6               | 1                   | -           |                       |
| CS185  | 30 - 55    | 1,98              | 30 - 50            | 298          | 1,98            | 540              | 263                 | 36 - 54       | 4/6               | 1                   | -           |                       |



# POWER HARROWS / SEEDERS

Heavy duty construction for the most difficult applications



- Three-point linkage Cat.1
- Working depth adjustable up to 16 cm
- Robust transmission
- Front steel levelling slat
- Protective steel side skirts
- Available as combination with a dedicated seeder

Made for **Kubota**

MTZ Power harrow

| Model  | Working width (m) | Total width (m) | Weight (kg) | Seeder weight (kg) | Tractor HP | Working depth (cm) | No. of blades | PTO RPM (1/min.) | Seeder width (m) | Seeder tank capacity (l) | Seeder drive |
|--------|-------------------|-----------------|-------------|--------------------|------------|--------------------|---------------|------------------|------------------|--------------------------|--------------|
| MTZ120 | 1,05              | 1,16            | 130         | -                  | 16 - 25    | 16                 | 12            | 540              | -                | -                        | -            |
| MTZ135 | 1,22              | 1,32            | 172         | -                  | 20 - 30    | 16                 | 14            | 540              | -                | -                        | -            |
| MTZ150 | 1,40              | 1,50            | 190         | -                  | 25 - 30    | 16                 | 16            | 540              | -                | -                        | -            |
| MTZ170 | 1,55              | 1,55            | 215         | -                  | 30 - 35    | 16                 | 18            | 540              | -                | -                        | -            |

MTZ power harrow + SM seeder

| Model      | Working width (m) | Total width (m) | Weight (kg) | Seeder weight (kg) | Tractor HP | Working depth (cm) | No. of blades | PTO RPM (1/min.) | Seeder width (m) | Seeder tank capacity (l) | Seeder drive |
|------------|-------------------|-----------------|-------------|--------------------|------------|--------------------|---------------|------------------|------------------|--------------------------|--------------|
| MTZ SM 120 | 1,05              | 1,16            | 200         | 70                 | 18 - 25    | 16                 | 12            | Cat. 1           | 1,10             | 60                       | Roller       |
| MTZ SM 135 | 1,22              | 1,32            | 250         | 78                 | 20 - 35    | 16                 | 14            |                  | 1,19             | 62                       |              |
| MTZ SM 150 | 1,40              | 1,50            | 285         | 95                 | 30 - 35    | 16                 | 16            |                  | 1,34             | 68                       |              |
| MTZ SM 170 | 1,55              | 1,70            | 320         | 105                | 30 - 40    | 18 - 30            | 18            |                  | 1,46             | 76                       |              |



Time-saving machines for perfect soil preparation. Stone and plant remains are effectively buried, leaving a perfect seedbed on the surface



# STONE BURRIER

- Three-point linkage Cat. 1
- Strong positive Drive system
- Overload clutch
- Smooth working depth adjustment up to 15 cm

Made for **Kubota**



| Model  | Working width (m) | Tractor HP | Working depth (cm) | Tiefeneinstellung           | No. of blades | Soil compaction | PTO RPM (1/min.) | Hitch cat. | Total width (m) | Total length (m) | Weight (kg) |
|--------|-------------------|------------|--------------------|-----------------------------|---------------|-----------------|------------------|------------|-----------------|------------------|-------------|
| TST113 | 1,13              | 18 - 30    | 14                 | Stepless by roller position | 32            | By roller       | 540              | Kat 1      | 1,32            | 1,1              | 218         |
| TST130 | 1,3               | 25 - 30    | 14                 |                             | 36            |                 |                  |            | 1,5             | 1,1              | 240         |
| TST150 | 1,5               | 30-40      | 14                 |                             | 40            |                 |                  |            | 1,7             | 1,1              | 280         |



**WIDE RANGE OF MACHINES FOR DOMESTIC AND COMMERCIAL GREEN AREA MAINTENANCE**

- Heavy grass and scrub cutting
- Finish mowing
- Mulching

# ROTARY MOWERS

Excellent cutting quality for lawn and parks maintenance



Equipment for lawn and meadow maintenance...

...for the meaningful design of the environment

# Green areas

- Three-point linkage Cat. 1
- Easily adjustable cutting height from 20 to 110 mm
- Robust powerful transmission
- Durable belt drive with overload protection
- Optional mulching kit available

| Model     | Mounting | Discharge | Working width (m) | Weight (kg) | Tractor HP | PTO RPM (1/min.) | Hitch cat. | No. of blades | Cutting height (mm) | Blades RPM |
|-----------|----------|-----------|-------------------|-------------|------------|------------------|------------|---------------|---------------------|------------|
| TC480NSLD | Rear     | Side      | 1,20              | 166         | 15-25      | 540              | Cat. 1     | 3             | 25 - 100            | 3250       |
| TC480NSRD |          | Rear      | 1,20              | 166         | 15-25      | 540              |            | 3             | 25 - 100            | 3250       |
| TC590NSLD |          | Side      | 1,50              | 187         | 15-30      | 540              |            | 3             | 25 - 100            | 2630       |
| TC590NSRD |          | Rear      | 1,50              | 198         | 15-30      | 540              |            | 3             | 25 - 100            | 2630       |
| TC710NSLD |          | Side      | 1,80              | 231         | 20-50      | 540              |            | 3             | 25 - 100            | 2230       |
| TC710NSRD |          | Rear      | 1,80              | 244         | 20-50      | 540              |            | 3             | 25 - 100            | 2230       |
| TC910NSRD |          | Rear      | 2,35              | 293         | 45-60      | 540              |            | 5             | 25 - 100            | 2630       |
| FA1200    |          | Rear      | 1,20              | 178         | 15-25      | 540              |            | 3             | 20 - 110            | -          |
| FA1500    |          | Rear      | 1,50              | 196         | 20-40      | 540              |            | 3             | 20 - 110            | -          |
| FA1800    |          | Rear      | 1,80              | 214         | 25-60      | 540              |            | 3             | 20 - 110            | -          |

Made for Kubota



# FLAIL MOWERS – REAR MOUNTED

An extensive range of versatile mowing equipment.



- Three-point linkage Cat. 1
- Robust transmission
- 4 mm Y-flails for give an excellent finish
- Height adjustable Roller
- FOX-S series with hydraulic 18 cm side offset



Made for **Kubota**

| Model      | Hitch cat. | Working width (m) | Total width (m) | Weight (kg) | Tractor HP | PTO RPM (1/min.) | No. of „Y“ flails | No. of hammer flails (option) | Cutting height (mm) | Cutting height adjustment       | Side offset |
|------------|------------|-------------------|-----------------|-------------|------------|------------------|-------------------|-------------------------------|---------------------|---------------------------------|-------------|
| FROG 960   | Cat. 1     | 0,96              | 1,20            | 95          | 15         | 540              | 48                | 24                            | 30 - 80             | Roller position                 | -           |
| FROG 1120  |            | 1,12              | 1,26            | 100         | 18         | 540              | 56                | 28                            | 30 - 80             |                                 | -           |
| FOX 1000   |            | 1,00              | 1,30            | 150         | 15 - 25    | 540              | 64                | 32                            | 30 - 80             |                                 | -           |
| FOX 1200   |            | 1,20              | 1,50            | 162         | 20 - 30    | 540              | 80                | 40                            | 30 - 80             |                                 | -           |
| FOX 1400   |            | 1,40              | 1,60            | 175         | 20 - 30    | 540              | 88                | 44                            | 30 - 80             |                                 | -           |
| FOX 1600   |            | 1,60              | 1,80            | 190         | 25 - 30    | 540              | 100               | 50                            | 30 - 80             |                                 | -           |
| FOX-S 1200 |            | 1,20              | 1,50            | 180         | 20 - 30    | 540              | 80                | 40                            | 30 - 80             | Manual (hydraulic as an option) |             |
| FOX-S 1400 |            | 1,40              | 1,60            | 193         | 20 - 30    | 540              | 88                | 44                            | 30 - 80             |                                 |             |
| FOX-S 1600 |            | 1,60              | 1,80            | 210         | 25 - 30    | 540              | 100               | 50                            | 30 - 80             |                                 |             |



Hammer flails with scaryfying blades (option)



< 4 mm «Y» flails



< 5 mm «Y» flails with scarification blades (option)

# FLAIL MOWERS - FRONT MOUNTED

Made for **Kubota**

Front mounted flail mowers for Kubota F-series and compact tractor

- Excellent cutting quality thanks to 4 mm Y-flails
- Height adjustment on front wheels (TEG) or the roller position
- Cutting height adjustable from 20 to 80 mm
- Sturdy transmission

| Model          | Mounting       | Working width (m) | Total width (m) | Weight (kg) | Machine HP | Front PTO RPM (1/min.) | No. of „Y“ flails | No. of hammer flails (option) | Cutting height (mm) | Height adjustment  |
|----------------|----------------|-------------------|-----------------|-------------|------------|------------------------|-------------------|-------------------------------|---------------------|--------------------|
| TEG            | Kubota F-Serie | 1,50              | 1,80            | 245         | 25 - 35    | 2500                   | 96                | 48                            | 20 - 80             | Distancing washers |
| SPECIAL 160 HD |                |                   |                 |             |            |                        |                   |                               |                     |                    |
| SCORPION 1200  |                |                   |                 |             |            |                        |                   |                               |                     |                    |
| SCORPION 1400  | Front hitch    | 1,20              | 1,50            | 195         | 18 - 25    | 1000                   | 80                | 40                            | 20 - 80             |                    |
| SCORPION 1400  | Front hitch    | 1,40              | 1,67            | 205         | 20 - 35    | 1000                   | 88                | 44                            | 20 - 80             |                    |
| SCORPION 1600  | Front hitch    | 1,60              | 1,80            | 210         | 25 - 35    | 1000                   | 100               | 50                            | 20 - 80             |                    |



Heavy Duty Flail Mowers



## HEAVY DUTY FLAIL MOWERS REAR MOUNTED

Made for **Кубота**

- Three-point linkage Cat 1
- Robust transmission with overload clutch
- Excellent cutting quality thanks to 4 mm Y-flails
- PUMA-H models with hydraulic side offset:
  - model 1200 and 1400 – 20 cm
  - model 1600 and 1800 – 25 cm

The PUMA range, Heavy duty and excellent performance in extreme conditions

| Model      | Hitch cat. | Working width (m) | Total width (m) | Weight (kg) | Tractor HP | PTO RPM (1/min.) | No. of „Y“ flails | No. of hammer flails (option) | Cutting height (mm) | Cutting height adjustment | Side offset                     |
|------------|------------|-------------------|-----------------|-------------|------------|------------------|-------------------|-------------------------------|---------------------|---------------------------|---------------------------------|
| PUMA 1200  | Cat. 1     | 1,20              | 1,50            | 210         | 25         | 540              | 76                | 38                            | 20 - 80             | Roller position           | -                               |
| PUMA 1200H |            | 1,20              | 1,50            | 210         | 25         | 540              | 76                | 38                            | 20 - 80             |                           | Manual (hydraulic as an option) |
| PUMA 1400  |            | 1,40              | 1,67            | 225         | 30         | 540              | 88                | 44                            | 20 - 80             |                           | -                               |
| PUMA 1400H |            | 1,40              | 1,67            | 246         | 30         | 540              | 88                | 44                            | 20 - 80             |                           | Manual (hydraulic as an option) |
| PUMA 1600  |            | 1,60              | 1,80            | 240         | 35         | 540              | 96                | 48                            | 20 - 80             |                           | -                               |
| PUMA 1600H |            | 1,60              | 1,80            | 240         | 35         | 540              | 96                | 48                            | 20 - 80             |                           | Manual (hydraulic as an option) |
| PUMA 1800  |            | 1,80              | 2,12            | 290         | 40         | 540              | 116               | 58                            | 20 - 80             |                           | -                               |
| PUMA 1800H |            | 1,80              | 2,12            | 290         | 40         | 540              | 116               | 58                            | 20 - 80             |                           | Manual (hydraulic as an option) |



## FLAIL MOWERS WITH SWATH COLLECTION

Made for **Кубота**



The KOALA and PANTHER series offer a perfect cutting and collecting performance in working widths from 120 to 200 cm

- Three-point linkage Cat. 1
- Robust power transmission
- Excellent cutting performance even in the toughest conditions thanks to hammer flails
- Effective swath collection
- Collect Capacities from 600l - 2100 l depending on the model
- High discharge for the «Professional» models up to max. 195 cm

< «Hammer» flails «PANTHER»



«Hammer» flails «KOALA»



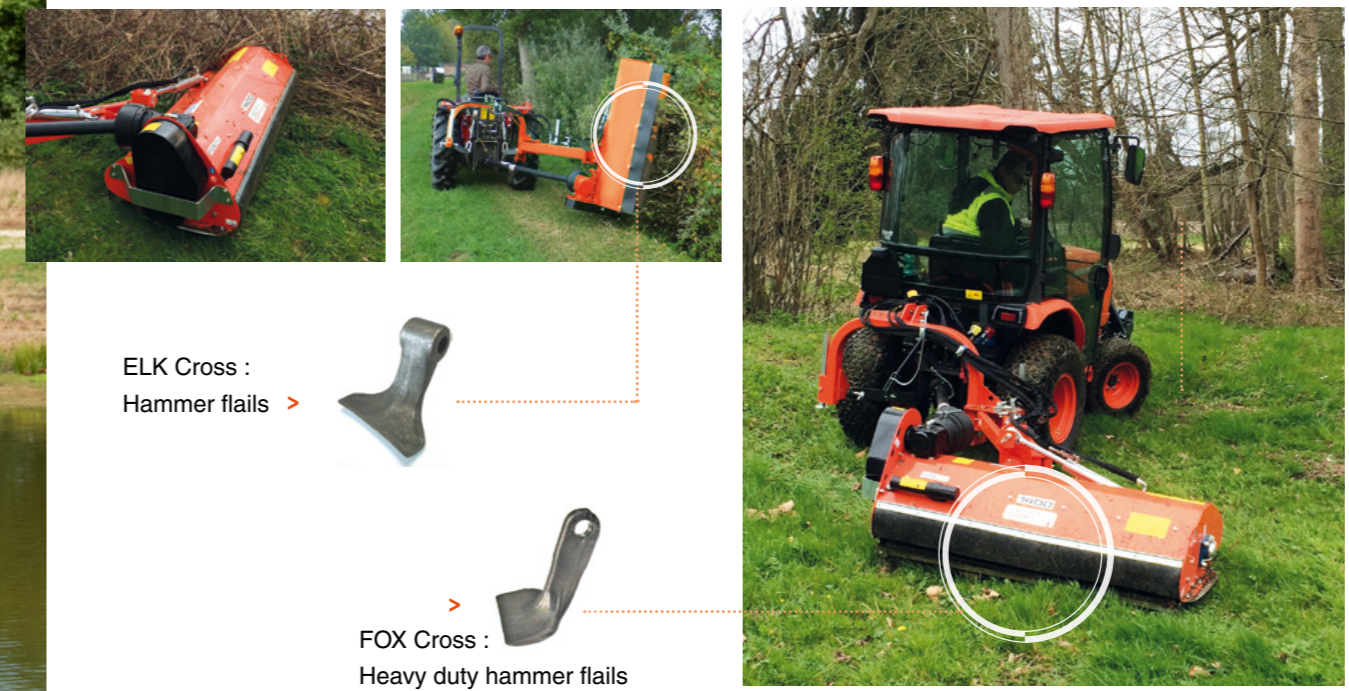
| Model            | Hitch cat. | Working width (m) | Total width (m) | Weight (kg) | Tractor HP | PTO RPM (1/min.) | Grass collector capacity (l) | Discharge | High discharge | High discharge height (m) | No. of hammer flails | Cutting height (mm) | Cutting height adjustment | Cutting height (mm) |
|------------------|------------|-------------------|-----------------|-------------|------------|------------------|------------------------------|-----------|----------------|---------------------------|----------------------|---------------------|---------------------------|---------------------|
| KOALA 1000       | Cat. 1     | 1,00              | 1,30            | 240         | 16         | 540              | 600                          | Hydraulic | -              | -                         | 32                   | 30 - 80             | Support wheels and roller | 30 - 80             |
| KOALA 1200       |            | 1,20              | 1,46            | 260         | 20         |                  | 700                          |           | -              | -                         | 40                   |                     |                           | 30 - 80             |
| KOALA 1200 PRO   |            |                   |                 | 360         | 25         |                  | 700                          |           | Yes            | 1,83                      | 40                   |                     |                           | 30 - 80             |
| KOALA 1600       |            |                   |                 | 1,60        | 1,76       |                  | 310                          |           | 25             | 900                       | -                    |                     |                           | -                   |
| KOALA 1600 PRO   |            | 400               | 30              |             |            |                  | 900                          |           | Yes            | 1,83                      | 50                   |                     |                           | 30 - 80             |
| PANTHER 1200     |            | 1,20              | 1,51            |             |            |                  | 454                          |           | 30             | 1200                      | -                    |                     |                           | -                   |
| PANTHER 1600     |            | 1,60              | 1,81            | 530         | 40         |                  | 1500                         |           | -              | -                         | 48                   |                     |                           | 30 - 80             |
| PANTHER 1600 PRO |            |                   |                 | 630         | 40         |                  | 1500                         |           | Yes            | 1,95                      | 48                   |                     |                           | 30 - 80             |
| PANTHER 1800     |            |                   |                 | 1,80        | 2,14       |                  | 590                          |           | 50             | 1800                      | -                    |                     |                           | -                   |
| PANTHER 1800 PRO |            | 700               | 50              | 1800        | Yes        |                  | 1,95                         |           | 58             | 30 - 80                   |                      |                     |                           |                     |
| PANTHER 2000     |            | 2,00              | 2,33            | 685         | 60         |                  | 2100                         |           | -              | -                         | 64                   |                     |                           | 30 - 80             |



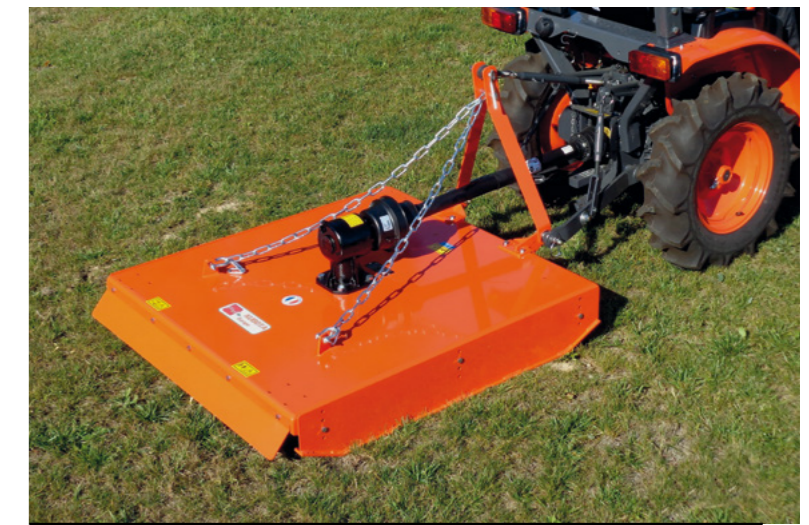


## SIDE PIVOTING FLAIL MOWERS

Excellent performance in hard to reach areas



| Model          | Working width (m) | No. of hammer flails | Cutting height (mm) | Side offset (cm) | Weight (kg) | Min. tractor weight (kg) | Tractor HP | Tractor series |
|----------------|-------------------|----------------------|---------------------|------------------|-------------|--------------------------|------------|----------------|
| FOX cross 1200 | 120               | 40                   | 20 - 80             | 199              | 260         | 700                      | 25         | B2 - ST        |
| FOX cross 1400 | 140               | 44                   | 20 - 80             | 215              | 270         | 750                      | 30         | B2 - ST        |
| FOX cross 1600 | 160               | 50                   | 20 - 80             | 229              | 290         | 800                      | 35         | ST - L1        |
| ELK cross 1200 | 120               | 10                   | 20 - 80             | 190              | 270         | 800                      | 30         | L1 - L2        |
| ELK cross 1400 | 140               | 12                   | 20 - 80             | 210              | 300         | 850                      | 35         | L1 - L2        |
| ELK cross 1600 | 160               | 14                   | 20 - 80             | 230              | 330         | 950                      | 40         | L1 - L2        |



## ROTARY CUTTERS

Meadow and orchard Maintenance

- Three-point linkage Cat. 1
- Robust rotor with two pendulum mounted blades
- Integrated freewheel
- Height adjustable side skirts

### Made for Kubota

| Model  | Working width (m) | No. of blades | Cutting height (mm) | Hitch cat. | Weight (kg) | Tractor HP | PTO RPM (1/min.) |
|--------|-------------------|---------------|---------------------|------------|-------------|------------|------------------|
| GA1000 | 100               | 2             | 20                  | Cat. 1     | 115         | 15 - 40    | 540              |
| GA1200 | 120               | 2             | 20                  |            | 145         | 18 - 40    |                  |
| GA1450 | 142               | 2             | 20                  |            | 230         | 30 - 50    |                  |





**VERSATILE EQUIPMENT FOR ROAD AND PAVING MAINTENANCE**

- Robust and effective technology
- Perfect for municipal use



Winter maintenance and street cleaning...

...for municipal and industrial areas

**Streets & roads**

# ROAD SWEEPERS

Large range with working widths from 120 to 170 cm, with and without collection container



- Attachment for A-frame
- Height adjustment via wheels
- Drive via front PTO
- Hydraulic lateral adjustment (option)
- Optional collection Box and side broom

| Model | Working width (m) | Sweeper diameter (mm) | Weight (kg) | Front PTO RPM (1/min.) | Tractor series | Hydraulic lateral swivel | Dirt container | Hydraulic side sweeper | Front hitch cat. |
|-------|-------------------|-----------------------|-------------|------------------------|----------------|--------------------------|----------------|------------------------|------------------|
| KM120 | 1,20              | 500                   | 130         | 2000                   | B1/BX          | opt.                     |                |                        | Cat. 0 / A-frame |
| KM120 | 1,20              | 500                   | 130         | 1000                   | B2             | opt.                     | opt.           |                        |                  |
| KM150 | 1,50              | 500                   | 157         | 1000                   | B2/ST          | opt.                     | opt.           | opt.                   |                  |
| KM170 | 1,70              | 500                   | 183         | 1000                   | L              | opt.                     | opt.           | opt.                   |                  |

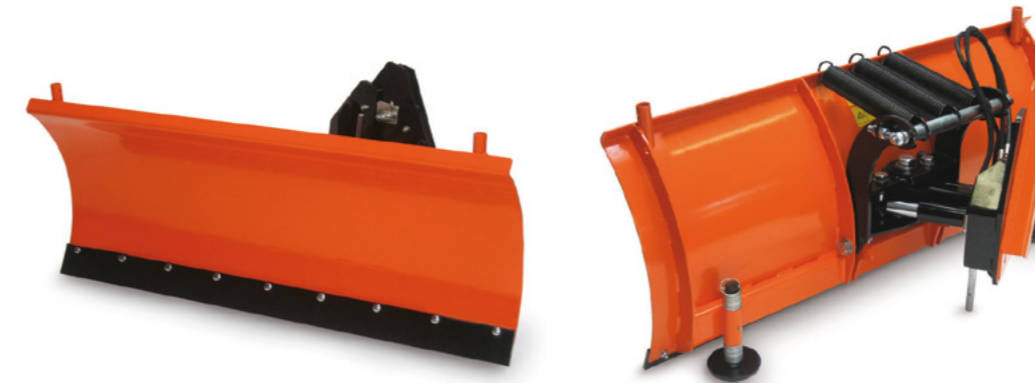
Made for **Kubota**



**PROFESSIONAL EQUIPMENT FOR WINTER MAINTENANCE**

- High quality
- Private and professional users
- Adjust to fit every size of tractor

# SNOWPLOWS



Snow ploughs for every application. Adjust to fit various tractor sizes  
Offering maximum efficiency in winter maintenance applications for both private and professional use

- Mounted on front hitch A-frame
- Working widths from 120 to 180 cm
- Overload spring/flap protection
- Optional hydraulic adjustment

| Model                        | Working width (m) | Weight (kg) | Tractor series | Hydraulic side swivel | Overload protection | Rubber scrape rail | Vulkollan scrape rail | Front hitch cat. |
|------------------------------|-------------------|-------------|----------------|-----------------------|---------------------|--------------------|-----------------------|------------------|
| Snow plough 125              | 1,25              | 83          | B1/BX          | opt.                  | Top springs         | opt.               | opt.                  | Cat. 0 / A-frame |
| Snow plough 125              | 1,25              | 95          | B2             | opt.                  |                     | opt.               | opt.                  |                  |
| Snow plough 150              | 1,50              | 127         | B2/ST          | std.                  |                     | opt.               | opt.                  |                  |
| Snow plough 160              | 1,60              | 130         | B2/ST          | std.                  |                     | opt.               | opt.                  |                  |
| Snow plough 180              | 1,80              | 135         | B2/ST/L        | std.                  | Spring flaps        | opt.               | opt.                  |                  |
| Spring flaps snow plough 150 | 1,50              | 170         | B2/ST          | std.                  |                     | opt.               | opt.                  |                  |
| Spring flaps snow plough 160 | 1,60              | 174         | ST/L           | std.                  |                     | opt.               | opt.                  |                  |
| Spring flaps snow plough 180 | 1,80              | 180         | ST/L           | std.                  |                     | opt.               | opt.                  |                  |
| Vario snow plough 150        | 1,50              | 219         | B2/ST          | std.                  |                     | opt.               | opt.                  |                  |
| Vario snow plough 180        | 1,80              | 250         | ST/L           | opt.                  |                     | opt.               | opt.                  |                  |

Made for **Kubota**



Snow removal Equipment...

...for public and private areas

# SNOW





## CONICAL SALT SPREADER FOR PROFESSIONAL USE

Professional conical salt spreader equipped with stainless steel hopper, powder-coated frame with zinc-based primer. Suitable for professional use.

- Three-point linkage Cat. 1
- PTO driven
- All major components made of stainless steel
- Simple spreading width with adjustment lever
- Galvanized and powder coated frame
- Integrated holder for shovel and broom
- Transport wheels
- Tarpaulin cover
- Optional: hydraulic spreading width regulation

Made for **Kubota**

| Model         | Capacity (l) | Load weight (kg) | Size (mm)          | Filling (height) | Weight (kg) | Hitch cat. | PTO RPM (1/min.) | Spreading width (m) | Spreading rate adjustment | Spreading width adjustment | Options                    |
|---------------|--------------|------------------|--------------------|------------------|-------------|------------|------------------|---------------------|---------------------------|----------------------------|----------------------------|
| WDS P-PRO 180 | 170          | 200              | 950 x 950 x 950    | 950              | 54          | Cat. 1     | 540              | 1 - 14              | Manual                    | Manual                     | Hydraulic width adjustment |
| WDS P-PRO 300 | 270          | 320              | 1050 x 1050 x 1090 | 950              | 58          | Cat. 1     | 540              | 1 - 14              |                           |                            |                            |





## SNOWBLOWERS FOR MUNICIPAL WINTER MAINTENANCE

Made for **Kubota**

Heavy-duty technology with working widths from 1.12 to 1.55 m

- Mounted on A-frame front hitch
- Hydraulic discharge chute control
- Optional discharge chute extension up to 2,1 m

| Model  | Working width (m) | Weight (kg) | Front PTO RPM (1/min.) | Machine series | Hydr. ejection swivel | Discharge chute extension | Front hitch cat.    |
|--------|-------------------|-------------|------------------------|----------------|-----------------------|---------------------------|---------------------|
| KSF112 | 1,12              | 170         | 2000                   | B1/BX          | std.                  | opt.                      | Cat. 0 /<br>A-frame |
| KSF112 | 1,12              | 162         | 1000                   | B2             | std.                  | opt.                      |                     |
| KSF135 | 1,35              | 173         | 1000                   | B2/ST/L        | std.                  | opt.                      |                     |
| KSF135 | 1,35              | 206         | 2500                   | F-Series       | std.                  | opt.                      |                     |
| KSF170 | 1,55              | 184         | 1000                   | L              | std.                  | opt.                      |                     |





Your Kubota distributor

**Kubota (Deutschland) GmbH** • Senefelder Strasse 3-5, D-63110 Rodgau/Nieder-Roden  
[www.kubota-eu.com](http://www.kubota-eu.com)

Every effort has been made to ensure that the contents of this publication were accurate and up-to-date at the time of going to press. All rights reserved. No part of this publication may be reproduced in any form by any means, without prior permission of Kubota. Kubota reserve the right as a manufacturer to amend and update any specification or performance information without notice, if required.

